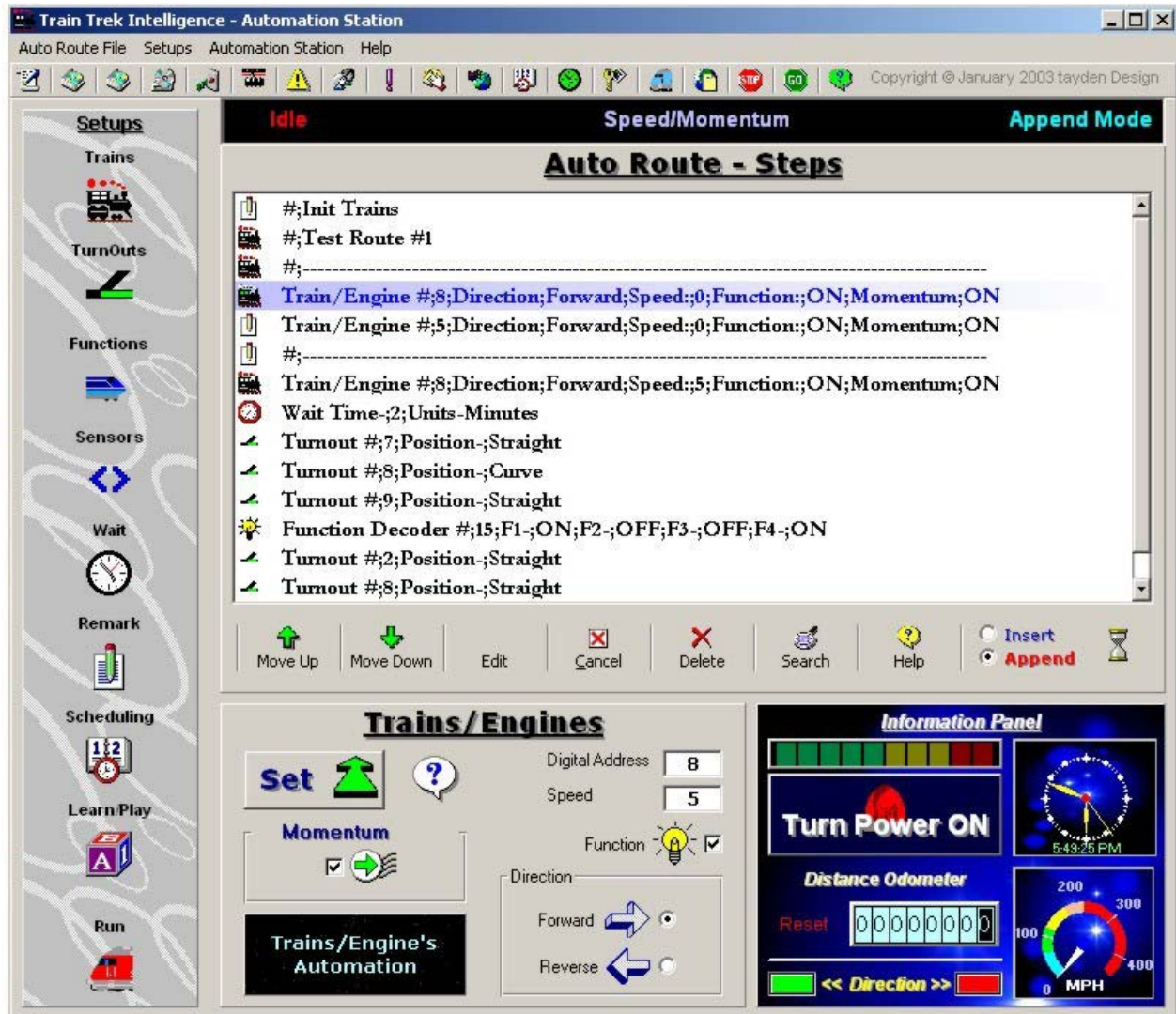


Train Trek Automation Station™

Layout Automation, Perfected!



Especially Designed for:

märklin
DIGITAL/DELTA

Train Trek Automation Station™

Layout Automation, Perfected!

- ✦ **Full Layout Automation** - Train Trek™ Automation Station provides an advanced automation environment for digital layout operation. *Smart behind the scene, yet easy for use, mainly intuitive!* The software includes a user friendly graphical user interface to easily automate all digital system devices including engines, turnouts, digital functions and accessories.
- ✦ **Artificial Intelligence Concept** - Train Trek™ Automation Station was designed based on advanced mathematical theories and approaches. The basic idea was to create an entire computerized environment that can be different from software that exists today, a system that can learn! A system, that will be interactively involved with the daily operation of the layout, watch it, study its characteristics and make its own conclusions for the future. **A system that will be intelligent and advanced, yet user friendly!** This program is for beginners as well as experienced railroaders. But most of all, it is a system that thinks!
- ✦ **Scheduled Automated Routes** - Schedule the entire layout operation. The entire layout can be setup to 'wakeup' at a certain time and 'go to sleep' at another time. Make your layout come alive automatically, run for couple hours and go into sleep mode until the next day. The system offers a nice combination of running by the date and the time of day. Trains can start/stop running during the day or night accompanied by turning the layout lights on/off to create a realistic illusion of the time of the day.
- ✦ **Learning Capabilities** - The software includes an Artificial Intelligence based system called **Learn & Play**. Simply click on the 'Start Learn' button and run your route. The software 'learns' the route as you execute it. When you are done running your route click: 'Play' to run your selected route! Next time when you are interested to run this particular route, simply load it and run it! This is just the beginning...
- ✦ Train Trek™ Automation Station is easy for use, mainly intuitive! It comes with user friendly users' manual and a 'To Get You Started in 3 easy steps' guide!
- ✦ Requirements: MS Windows 98/ME/2000/NT/XP, Pentium Based System, 128 MB RAM, 20 MB HD, SVGA
- ✦ **24/7 Customer support via our web site at www.tayden.com we guarantee to answer any email within hours!**

Tayden Design, Inc.

5101 Starcross Lane
Durham, NC 27713
Phone: (919) 699-0996
Fax: (919) 493-6741
www.tayden.com

Technical Support

**Monday through Friday:
9:00 AM to 5:00 PM PST
Email Support:
24 hours / 7 Days
Support@tayden.com**