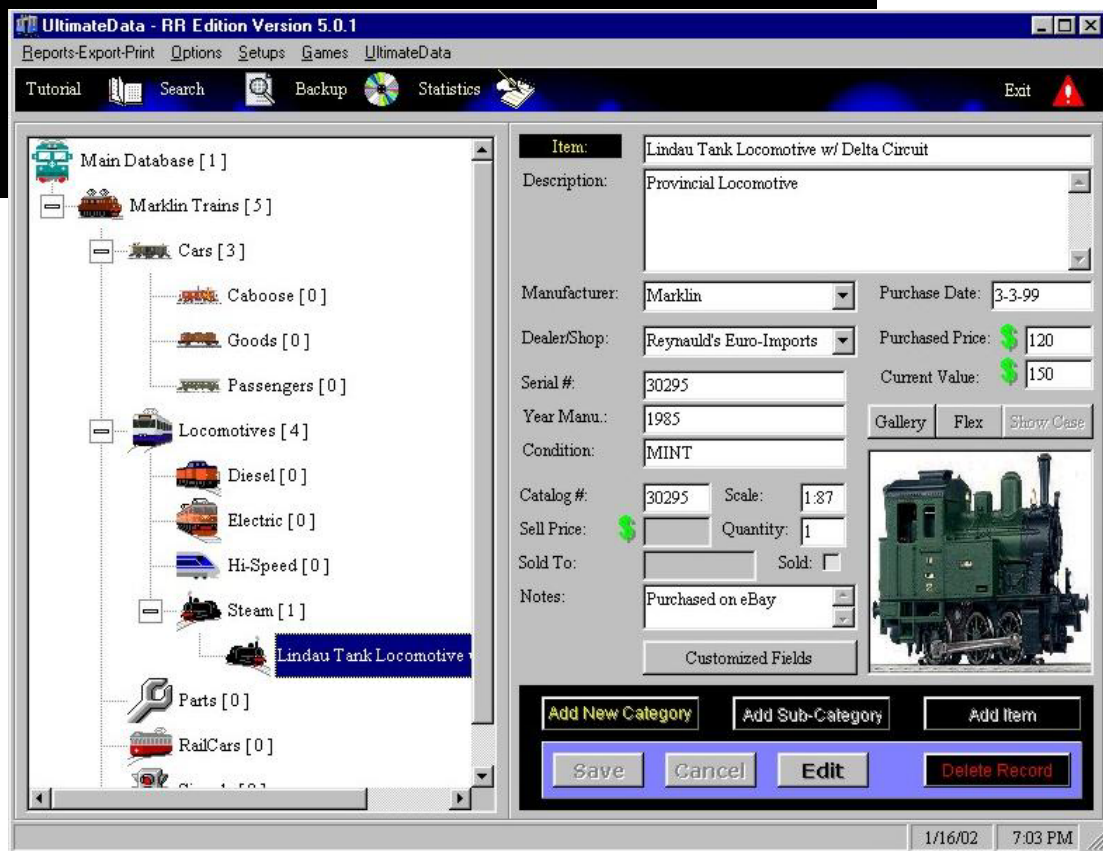


UltimateData RR Edition™ ServiceTracker™

Advanced Inventory System with Automatic Service Tracking System



Especially Designed for Model Railroading Collectors

UltimateData RR Edition™ ServiceTracker™

Advanced Inventory System with Automatic Service Tracking System

- ✦ **UltimateData™ RR Edition including ServiceTracker™** - Innovative customizable Inventory Software, a special version for the Model Railroader. Based on years of customer's opinions and suggestions we have designed an entire new concept in inventory control especially for the serious collector. Simple for use, yet smart behind the scene. User friendly, and mainly intuitive.
- ✦ **Universal & Customizable** - With UltimateData™ you can customize and personalized your database. Using one database system you can store any type of collectibles or have the flexibility to customize the database according to your collection. **There are no limitations on the number of items that you can store!** (The only limitation is the user Hard Drive size)
- ✦ **Service Tracking System** - ServiceTracker™ was especially designed to keep track of all of your rolling stocks' service and maintenance. With ServiceTracker™ you can record periodical maintenance and service performed on your rolling stock. The software analyzes the items servicing information and checks the manufacturer recommendations that have been provided by the user, actual run-time and storage time. The software keeps track of the service schedules and reminds the user about inspections, service, maintenance and test-runs that should be done, on time!
- ✦ **Advanced Graphic Technique** - A graphical icon for quick identification represents each category. The items are organized under each category icon in a Tree Structure. In this way in one click of a button on the category icon and the entire data is opened for viewing. Another click on any item will reveal the entire details about the item. **Simple for use, mainly intuitive!**
- ✦ **Store Item's Images** - UltimateData™ offers the storage for a Show Case image as the representative of your gallery that can store up to 10 images, for a total of 11 images per item. Using our patented technology user may use the 'Flex Viewer' feature for detailed item observation. UltimateData™ also offers an advanced Zoom technique for more detailed close ups.
- ✦ **Advanced Reporting System** - UltimateData™ advanced reporting system allows you to Export your database to MS Excel, MS Word, Text, HTML, Lotus and other industry standard database formats. Each category includes Total Value and other useful information for insurance purposes. User may view the entire database report or selected category, sub-category or item report.
- ✦ **Requirements:** MS Windows 98/ME/2000/NT/XP, Pentium Based System, 128 MB RAM, 20 MB HD, SVGA
- ✦ **24/7 Customer support via our Web site at www.tayden.com**
We guarantee to answer any email within hours!

Tayden Design, Inc.
5101 Starcross Lane
Durham, NC 27713
Phone: (919) 699-0996
Fax: (919) 493-6741
www.tayden.com

Technical Support
Monday through Friday:
9:00 AM to 5:00 PM PST
Email Support:
24 hours / 7 Days
Support@tayden.com